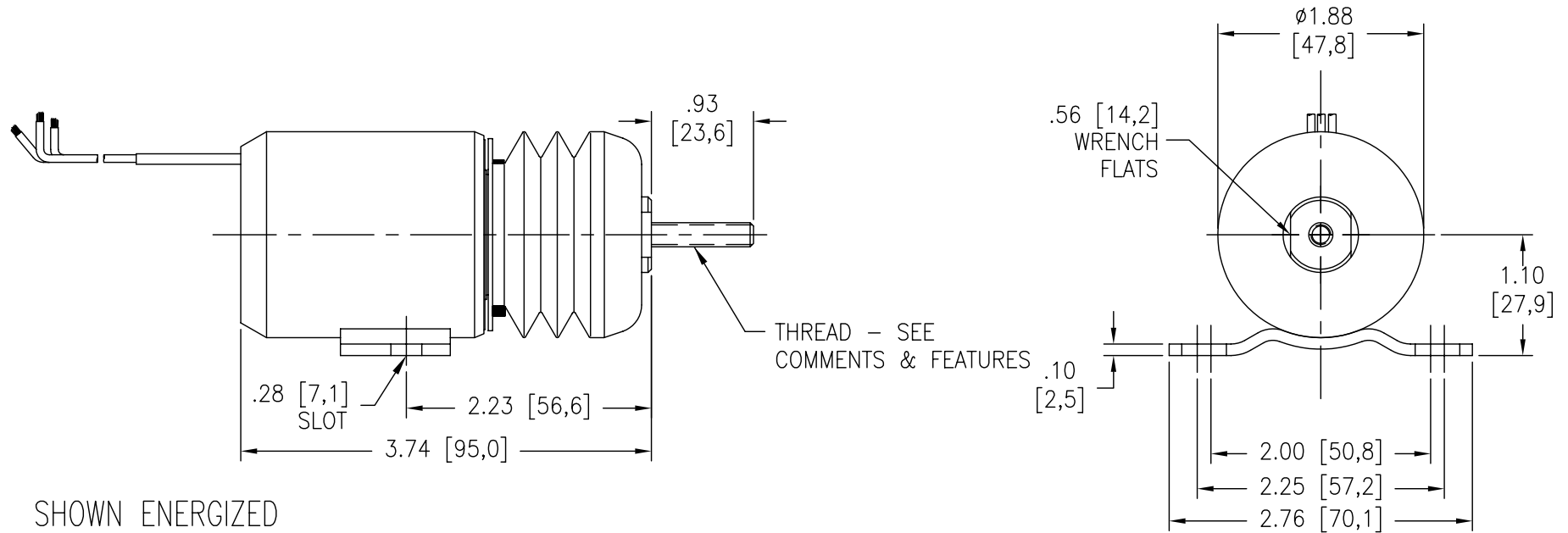


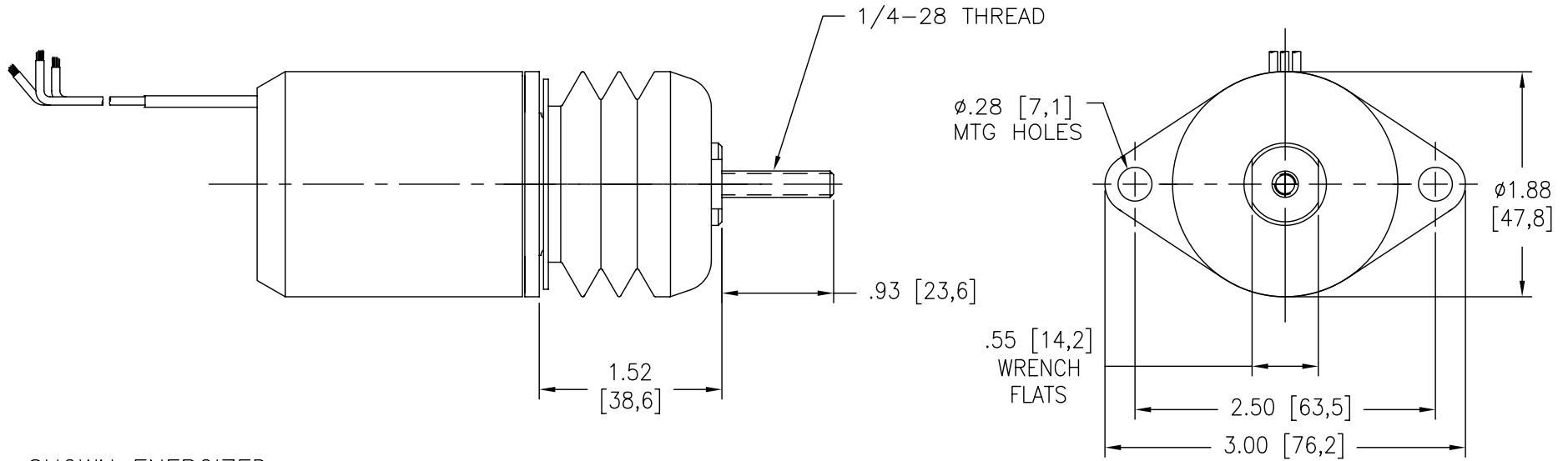
SHOWN ENERGIZED

Model #	Net Pull Force (lbs./newtons)	Net Hold Force (lbs./newtons)	Max. Stroke (inch [mm])	Voltage	Coil Resis. (ohms)	Pull-in (amps)	Hold (amps)	Spring	Boot	Comments & Features
P612-A4V12	23/102	43/191	1.00 [25.4]	12 VDC	.205/15.5	59.3	.77	No	Yes	
P612-A4V24	23/102	43/191	1.00 [25.4]	24 VDC	.739/59.8	32.9	.40	No	Yes	
P612-B4V12	19/85	35/156	1.00 [25.4]	12 VDC	.205/15.5	59.3	.77	Light	Yes	
P612-B4V24	19/85	35/156	1.00 [25.4]	24 VDC	.739/59.8	32.9	.40	Light	Yes	
P612-C4V12	16/71	32/142	1.00 [25.4]	12 VDC	.205/15.5	59.3	.77	Heavy	Yes	
P612-C4V24	16/71	32/142	1.00 [25.4]	24 VDC	.739/59.8	59.3	.40	Heavy	Yes	



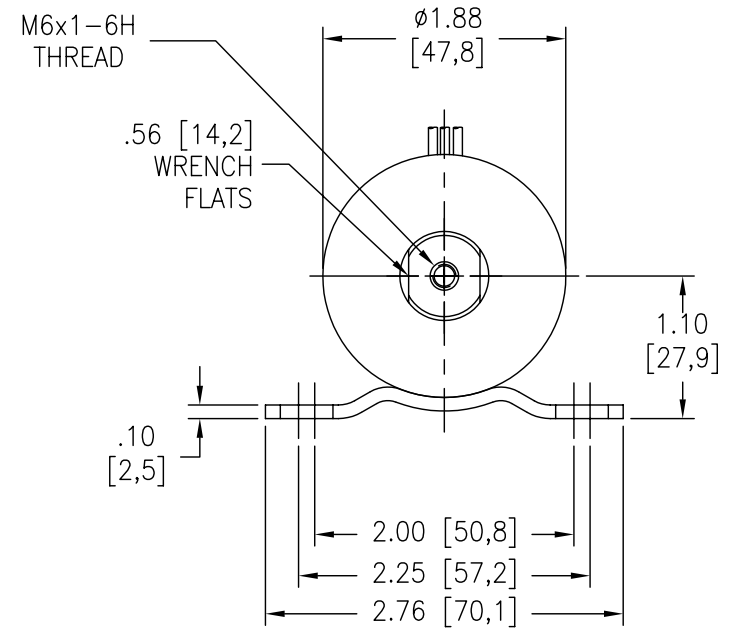
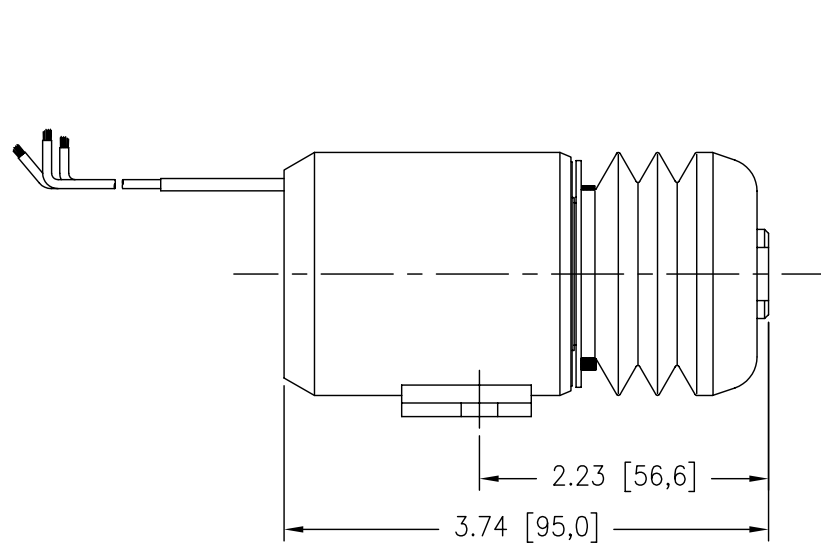
SHOWN ENERGIZED

Model #	Net Pull Force (lbs./newtons)	Net Hold Force (lbs./newtons)	Max. Stroke (inch [mm])	Voltage	Coil Resis. (ohms)	Pull-in (amps)	Hold (amps)	Spring	Boot	Comments & Features
P612-A1V12	23/102	43/191	1.00 [25.4]	12 VDC	.205/15.5	59.3	.77	No	Yes	1/4-28 threaded rod
P612-A1V24	23/102	43/191	1.00 [25.4]	24 VDC	.739/59.8	32.9	.40	No	Yes	1/4-28 threaded rod
P612-B1V12	19/85	35/156	1.00 [25.4]	12 VDC	.205/15.5	59.3	.77	Light	Yes	1/4-28 threaded rod
P612-B1V24	19/85	35/156	1.00 [25.4]	24 VDC	.739/59.8	32.9	.40	Light	Yes	1/4-28 threaded rod
P612-C1V12	16/71	32/142	1.00 [25.4]	12 VDC	.205/15.5	59.3	.77	Heavy	Yes	1/4-28 threaded rod
P612-C1V24	16/71	32/142	1.00 [25.4]	24 VDC	.739/59.8	32.9	.40	Heavy	Yes	1/4-28 threaded rod
P612-A11V12	23/102	43/191	1.00 [25.4]	12 VDC	.205/15.5	59.3	.77	No	Yes	1/4-28 threaded rod, Deutsch connector
P612-C9V12	16/71	32/142	1.00 [25.4]	12 VDC	.205/15.5	59.3	.77	Heavy	Yes	M6 x 1 threaded rod
P612-B9V12	19/85	35/156	1.00 [25.4]	12 VDC	.205/15.5	59.3	.77	Light	Yes	1/4-28 Threaded rod, Packard connector



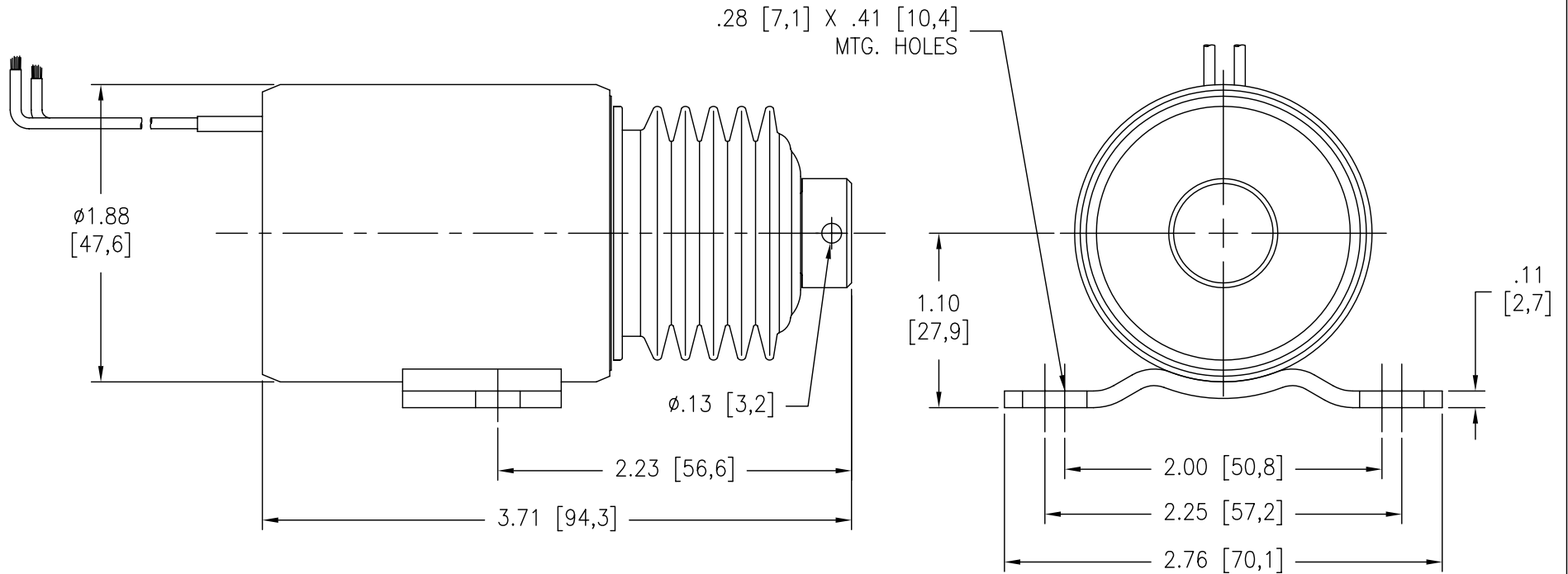
SHOWN ENERGIZED

Model #	Net Pull Force (lbs./newtons)	Net Hold Force (lbs./newtons)	Max. Stroke (inch [mm])	Voltage	Coil Resis. (Ohms)	Pull-in (amps)	Hold (amps)	Spring	Boot	Comments & Features
P612-A2V12	23/102	43/191	1.00 [25.4]	12 VDC	.205/15.5	59.3	.77	No	Yes	
P612-A2V24	23/102	43/191	1.00 [25.4]	24 VDC	.739/59.8	32.9	.40	No	Yes	
P612-B2V12	19/85	35/156	1.00 [25.4]	12 VDC	.205/15.5	59.3	.77	Light	Yes	
P612-B2V24	19/85	35/156	1.00 [25.4]	24 VDC	.739/59.8	32.9	.40	Light	Yes	
P612-C2V12	16/71	32/142	1.00 [25.4]	12 VDC	.205/15.5	59.3	.77	Heavy	Yes	
P612-C2V24	16/71	32/142	1.00 [25.4]	24 VDC	.739/59.8	32.9	.40	Heavy	Yes	
P612-A6V12	23/102	43/191	1.00 [25.4]	12 VDC	.205/15.5	59.3	.77	No	Yes	No threaded rod
P612-A6V24	23/102	43/191	1.00 [25.4]	24 VDC	.739/59.8	32.9	.40	No	Yes	No threaded rod
P612-B6V12	19/85	35/156	1.00 [25.4]	12 VDC	.205/15.5	59.3	.77	Light	Yes	No threaded rod
P612-B6V24	19/85	35/136	1.00 [25.4]	24 VDC	.739/59.8	32.9	.40	Light	Yes	No threaded rod
P612-C6V12	16/71	32/142	1.00 [25.4]	12 VDC	.205/15.5	59.3	.77	Heavy	Yes	No threaded rod
P612-C6V24	16/71	32/142	1.00 [25.4]	24 VDC	.739/59.8	59.3	.40	Heavy	Yes	No threaded rod



SHOWN ENERGIZED

Model #	Net Pull Force (lbs./newtons)	Net Hold Force (lbs./newtons)	Max. Stroke (inch [mm])	Voltage	Coil Resis. (ohms)	Pull-in (amps)	Hold (amps)	Spring	Boot	Comments & Features
P612-A7V12	23/102	43/191	1.00 [25.4]	12 VDC	.205/15.5	59.3	.77	No	Yes	
P612-A7V24	23/102	43/191	1.00 [25.4]	24 VDC	.739/59.8	32.9	.40	No	Yes	
P612-B7V12	19/85	35/156	1.00 [25.4]	12 VDC	.205/15.5	59.3	.77	Light	Yes	
P612-B7V24	19/85	35/156	1.00 [25.4]	24 VDC	.739/59.8	32.9	.40	Light	Yes	
P612-C7V12	16/71	32/142	1.00 [25.4]	12 VDC	.205/15.5	59.3	.77	Heavy	Yes	
P612-C7V24	16/71	32/142	1.00 [25.4]	24 VDC	.739/59.8	32.9	.40	Heavy	Yes	
P612-C11V12	16/71	32/142	1.00 [25.4]	12 VDC	.205/15.5	59.3	.77	Heavy	Yes	Yazaki connector & ground lug
P612-C13V12	16/71	32/142	1.00 [25.4]	12 VDC	.205/15.5	59.3	.77	Heavy	Yes	Yazaki connector & ground lug



SHOWN ENERGIZED

Model #	Net Pull Force (lbs./newtons)	Net Hold Force (lbs./newtons)	Max. Stroke (inch [mm])	Voltage	Coil Resis. (ohms)	Pull-in (amps)	Hold (amps)	Spring	Boot	Comments & Features
P612-A9	24/107	24/107	1.00 [25.4]	12 VDC	.205	58.5	4.6	No	Yes	Pulse duty, use with S500-A60 module